

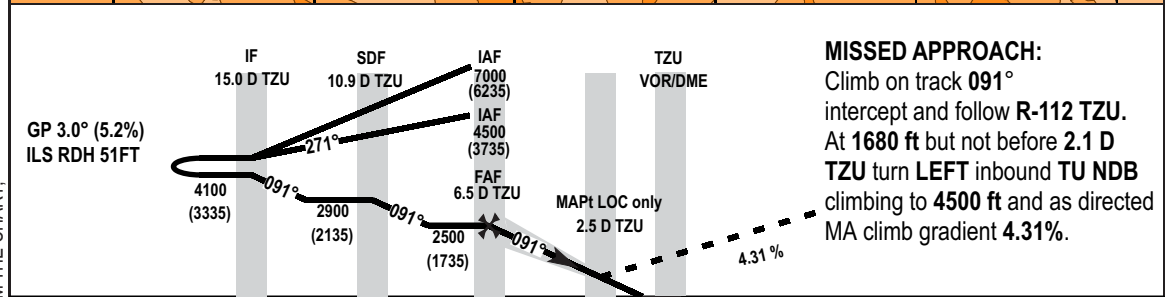
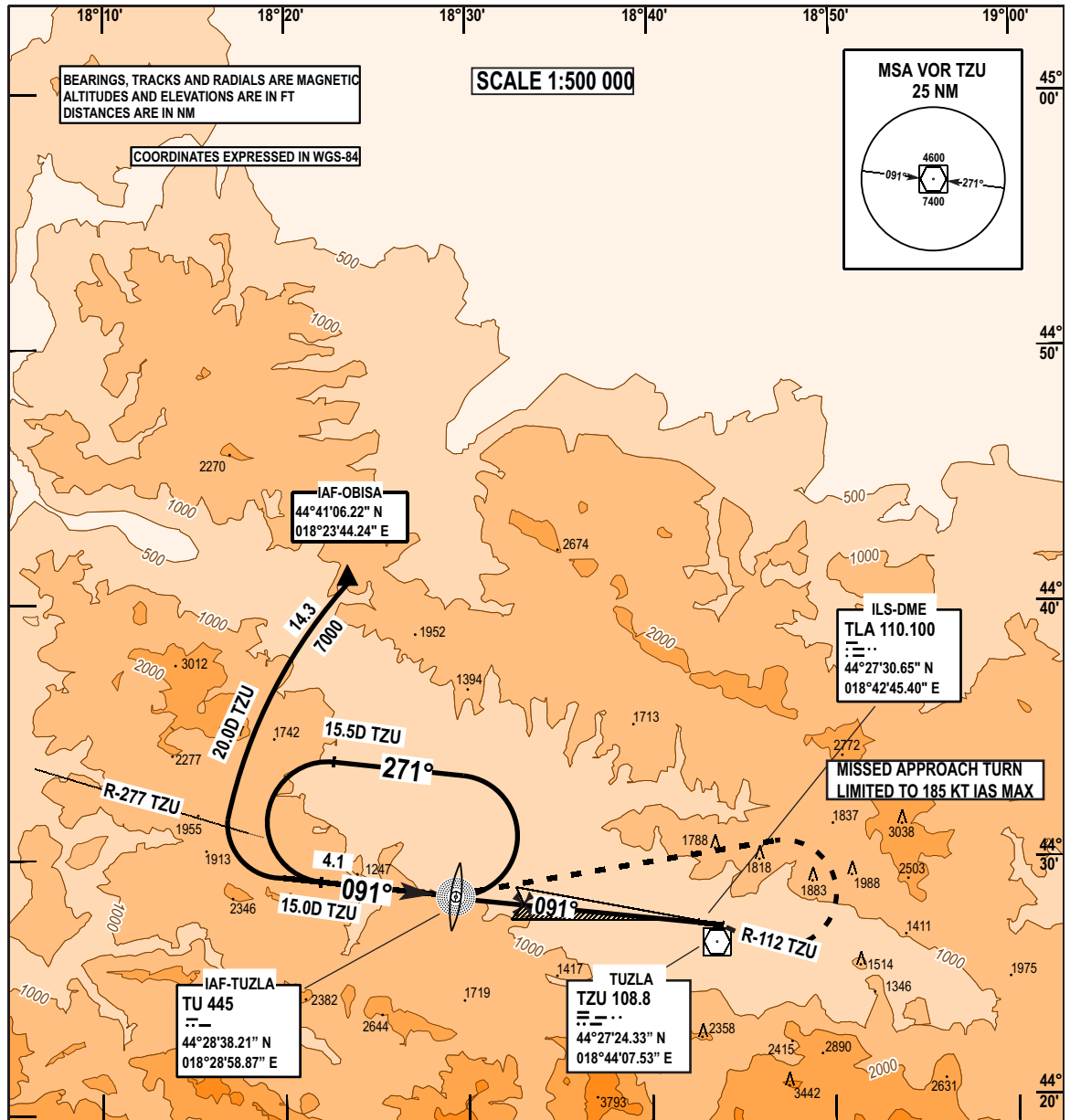
**INSTRUMENT
APPROACH
CHART - ICAO**

**AERODROM ELEV 784 FT
HEIGHTS RELATED TO
THR RWY 09 ELEV 765 FT**

**TRANSITION
ALTITUDE
10 000 FT
VAR 5° E (2020)**

**APP 120.350
TWR 132.925**

**TUZLA (LQ TZ)
ILS Z RWY 09
MISSED APP 4.31%**



CHG: NDB ZV DELETED FROM THE CHART:

MISSED APPROACH:	
Climb on track 091° intercept and follow R-112 TZU. At 1680 ft but not before 2.1 D TZU turn LEFT inbound TU NDB climbing to 4500 ft and as directed MA climb gradient 4.31%.	

MISSED APPROACH				
NM to/from THR09	IF 15.0 D TZU	SDF 10.9 D TZU	IAF 7000 (6235)	TZU VOR/DME
13.9	9.8	5.4	1.3	0.0 1.1
4100 (3335)	2900 (2135)	2500 (1735)	7000 (6235)	
			IAF 4500 (3735)	
			FAF 6.5 D TZU	
			MAPt LOC only 2.5 D TZU	

OCA (H)	A	B	C	D
ILS CAT I - MA 4.31%		1013 (248)		
LOC ONLY - MA 4.31%		1150 (385)		
Circling	1660 (895)	1760 (995)	2280 (1515)	2390 (1625)

Note: Visual circling not authorised south of RWY due to highly mountainous terrain

FAF to MAPt DISTANCE 3.2 NM TIMING NOT AUTHORISED FOR DEFINING THE MAPt						
KT	70	90	100	120	140	160
MIN : SEC	3:31	2:44	2:28	2:03	1:46	1:33
Rate of descent FT/MIN	385	495	549	659	768	882

THIS PAGE INTENTIONALLY LEFT BLANK